

# SECRET UCT TRAPHEL INPHO

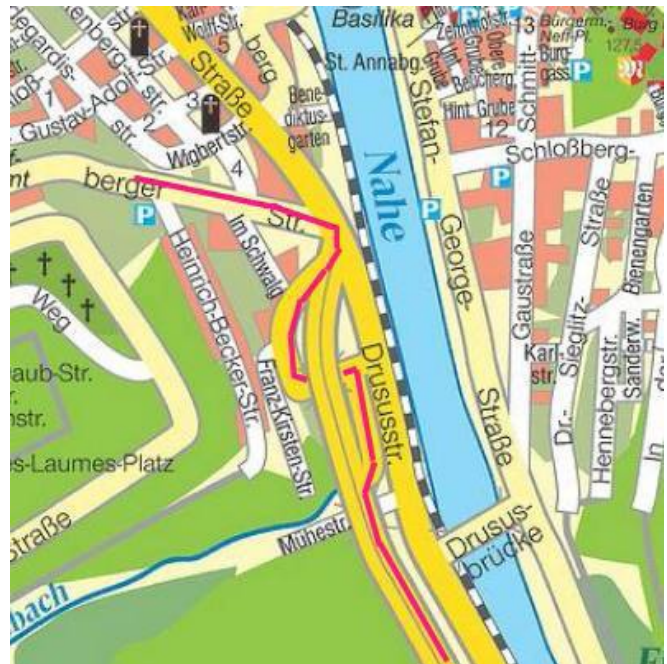
Ok, first get to Bingen am Rhein. When coming on the A60 from Mainz, don't exit at "Bingen-Zentrum / Bingen-Ost / Bingen-Kempton", but move over to A61 a few kms later, direction "Koblenz / Bingen-Mitte".

On A61, take exit "Bingen-Mitte / B9". You'll end up on the B50. Take the LEFT lane heading to "St. Goar / Bingen / Sportzentrum". You'll end up on the B9.

Until now, this is exactly the same route as to Breakpoint. But now, things change **OMG!!!**

**DON'T** take the exit to "Bin-Büdesheim / Zentrum", but instead use the left lane to "Bin-Bingerbrück".

Now, shortly before entering Bingerbrück, you'll see the most fucked up and complex crossing of all times. Here is how to master it: There will be an exit to the right going downwards. Signs are to Weiler. Take this exit. You'll end at a crossing below the main road. Go left to Weiler, using the tunnel under the road. Now it goes up again and you will be on the opposite side (left) of the road. Drive straight ahead over the confusing crossing to **WEILER. WEILER!** (No, the map isn't accurate. There is no single map of Bingen that managed to correctly show the crossing).



Some pics on the next page....

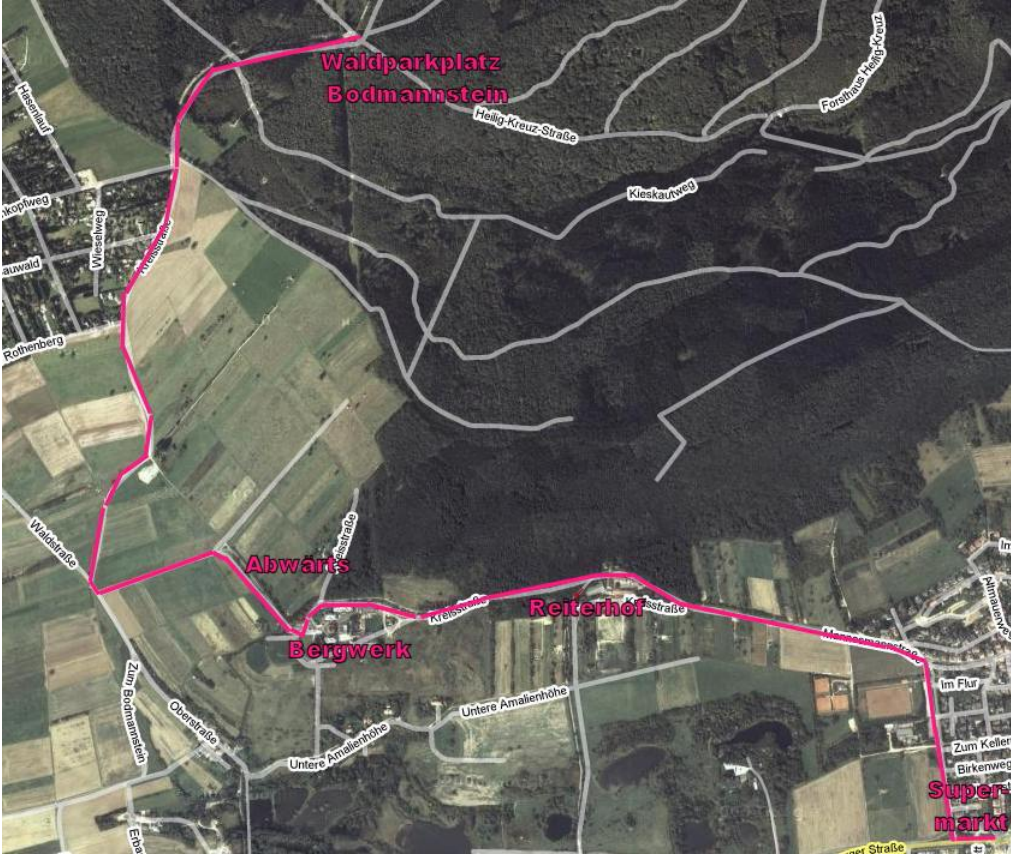


**If you are here, everything is fine. If not, game over.**



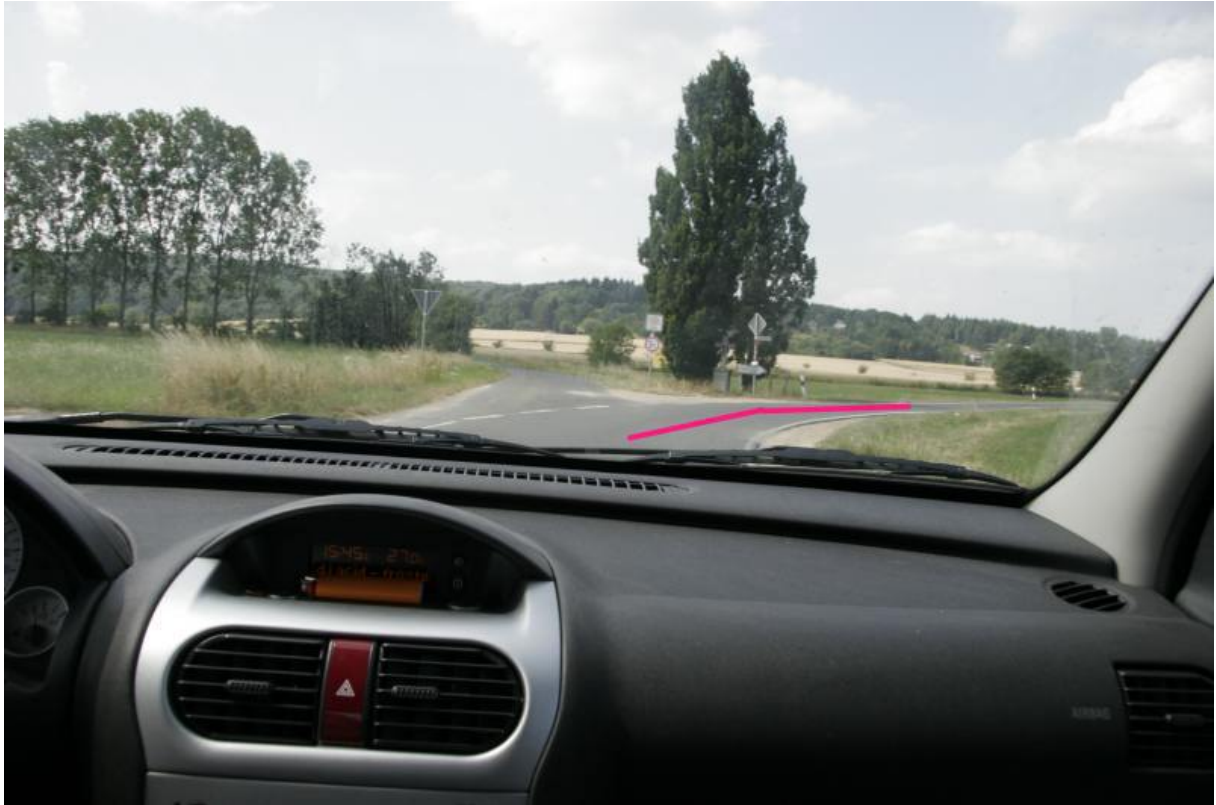


Follow this road uphill into the forest. In the distance you'll spot the tower of a Bergwerk. This is a good sign. You'll enter the forest, and pass a Reiterhof... one day you'll be at the top of the hill, at the old Bergwerk. At the useless round place in front of it, turn right again, going downhill.





**Ok, so we are now im kuscheligen Feld wie man sieht. Turn right. And directly turn right again:**



**Follow that small road through the meadows. After some time it will go uphill again. On the left side there will be lots of stupid Ferienhäuser. Ignore them and go straight ahead. You'll see some stupid "Willkommen in unserem langweiligem Wald"-Banners and enter the forest.**

**After a few meters inside the forest, you'll see a big Wanderparkplatz on the right, and a stupid stone in front of you. This is called the "Bodmannstein".**



**(There is no need so komisch zu fahren wie ich).**

**Well. This was the easy part, with real roads and stuff.**

**PREPARE FOR DEATH!**